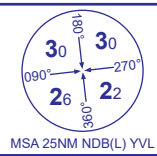
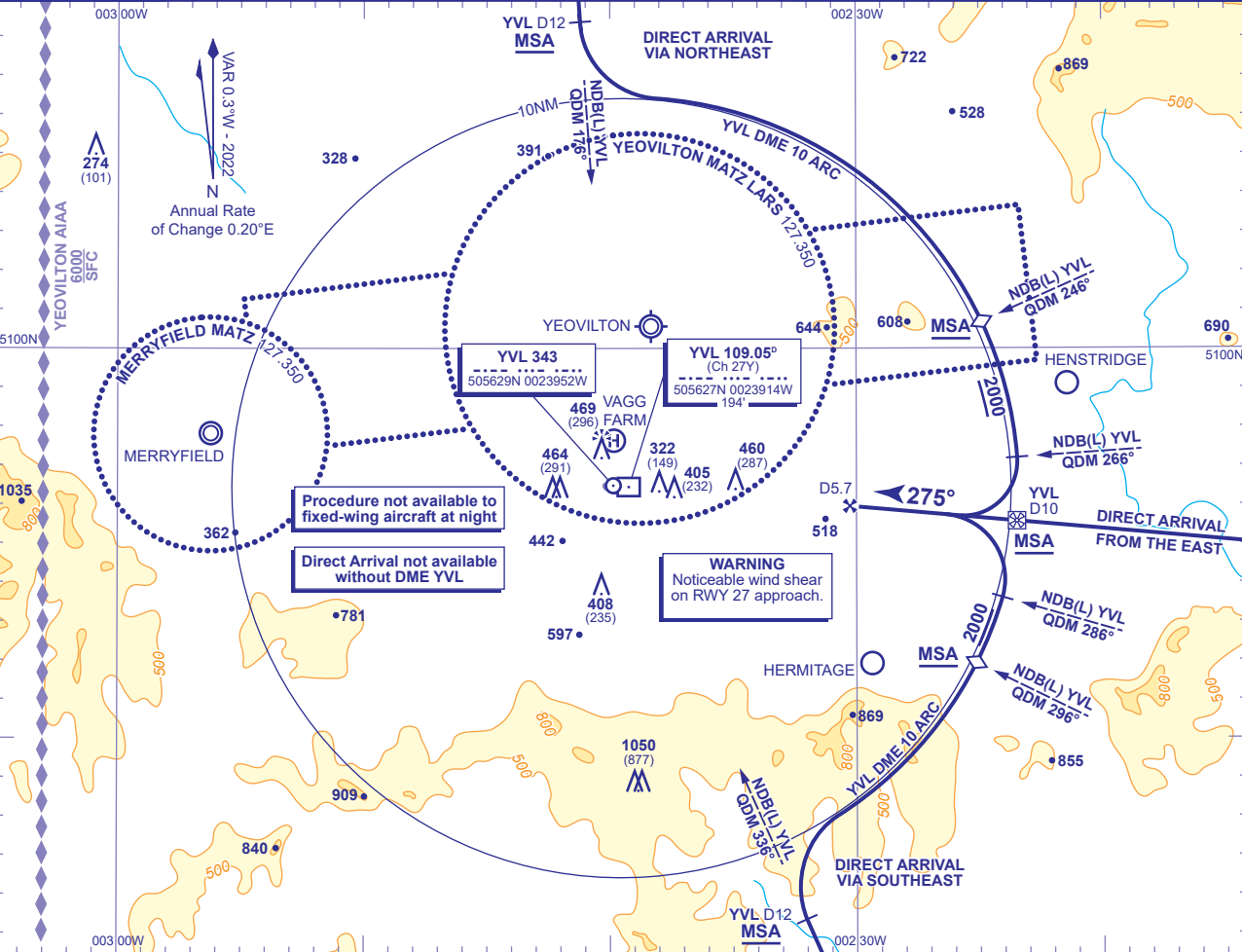


Direct Arrivals
to NDB(L)/DME
RWY 27
(ACFT CAT A,B)



APP	130.805	WESTLAND APPROACH	AD ELEVATION	202
TWR	125.405	WESTLAND TOWER	THR ELEVATION	173
			OBSTACLE ELEVATION	1050 AMSL (877) (ABOVE THR)
			BEARINGS ARE MAGNETIC	

TRANSITION ALTITUDE
3000



DIRECT ARRIVAL FROM THE EAST
Arrival **not below MSA** to intercept and establish on extended FAT. After passing IAF (NDB(L) YVL QDM 275° YVL DME 10) descend to cross FAF (DME 5.7) at **2000**(1827) then continue as for main procedure.

DIRECT ARRIVAL FROM THE NORTHEAST (Subject to ATC approval form Yeovil Radar)
Track towards NDB(L) YVL, **not below MSA**, NDB(L) YVL QDM 176° and 246°. At YVL DME 12 turn left and establish on the YVL DME 10 arc. After passing NDB(L) YVL QDM 246° descend to **not below 2000**. At NDB(L) YVL QDM 266° turn right to establish on extended FAT. When established on the extended FAT, continue as for main procedure.

DIRECT ARRIVAL FROM THE SOUTHEAST
Track towards NDB(L) YVL, **not below MSA**, between NDB(L) YVL QDM 336° and 296°. At YVL DME 12 turn right and establish on the YVL DME 10 arc. After passing NDB(L) YVL QDM 296° descend to **not below 2000**. At NDB(L) YVL QDM 286° turn left to establish on extended FAT. When established on the extended FAT, continue as for main procedure.